

TRAIL PLAN UPDATE 2024

Previous Trail Plan

Trail Improvements

New Trails

Other Projects

Competition Trail Plan

1



TRAIL PLAN

- Revised in 2022
- Key themes:
 - Improve what we have
 - Address changing climate
 - Look for grooming efficiencies
 - Focus new trails on key gaps

TRAIL IMPROVEMENTS: COMPLETED

3

- 2 New Bridges: Pine Creek and Wetzin'kwa
- Grading and Culverts:
 - Wetzin'kwa trail
 - Pine Creek 5km and 10 km
 - Hound Heaven
 - Pooch Paradise
- Grading; rock hammer. Perimeter, Northern Lights
- Adventure trail; widened to allow Ginsu grooming



TRAIL IMPROVEMENTS; STILL NEEDED

- Select culverts and drainage
- Grading and Rock work
 - Wild Dog
 - Hilltop
 - Perimeter section includes the Wall
 - Demo Forest Connector
- Gates: replace cables with gates on 3 to 5 locations
- Wider Bridge Deck on Demo Forest
- Estimate total cost of remaining upgrades: \$50k to \$100K

NEW TRAILS

Completed

- Adventure Trail. Phase 1 2.8 km section
- Swamp Bypass
- Valleyview Connector

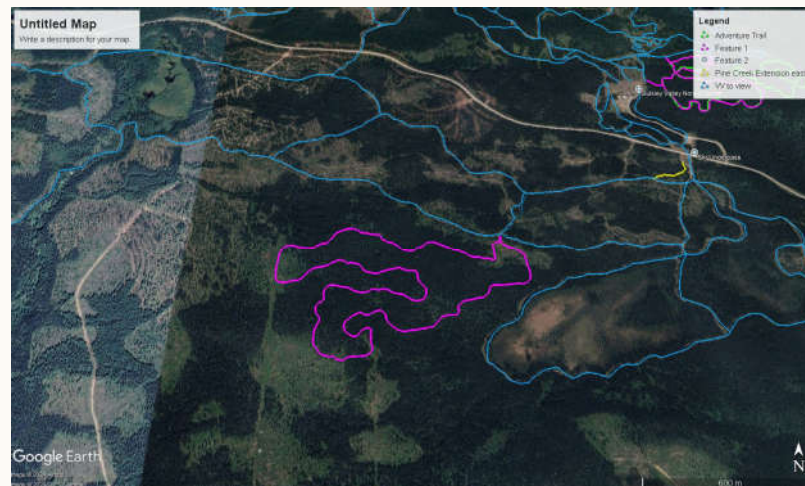
Planned. Authorization in place

- Adventure Trail. Phase 2. 1.2 km upper loop
 - Wildfire crew will start clearing R/W in 2025
 - Would require +/- \$5k for construction



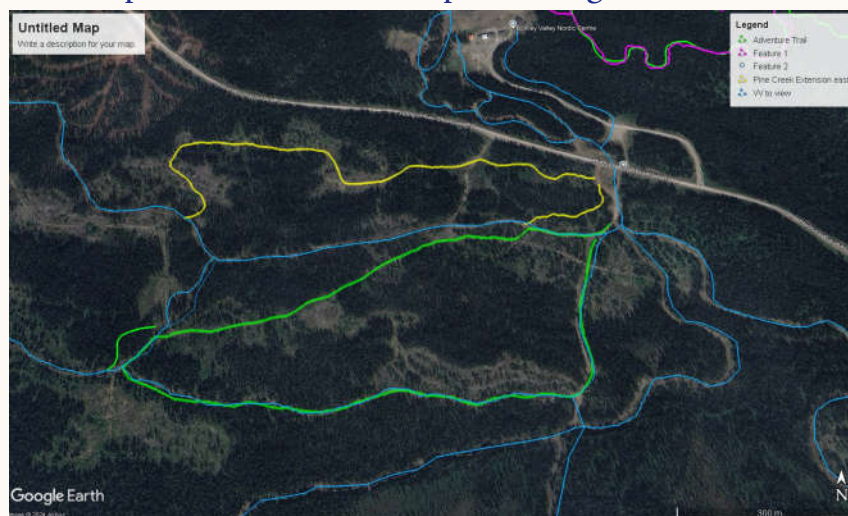
POTENTIAL FUTURE TRAILS

- Swamp Dog; Not approved by RSTBC due to environmental concerns
- New Dog Trail: Top Dog or Canis Loopis trail
 - Layout complete. 4.7 km easy/intermediate



POTENTIAL FUTURE TRAILS

- Dogless Pine Creek Trail: preliminary layout complete
- Revised Hound Heaven using old trail
- Would separate Pine Creek Loop from dog trails at the tunnel



OTHER

- Outhouse in lower parking lot
 - To be complete this winter

Classic only trail network

- Extensive recce work complete east of Perimeter trail
- Adventure trail is proof of concept
- Concerns from other users about crossing hiking trails. More planning and consultation required.

No work started

- Trail Cabin
- Upper Trail System

COMPETITION TRAIL PLAN

- Goals:
 - Add more complex and fun training terrain close to the stadium
 - Reduce pressure on grooming by optimizing current system
 - eliminate 3-way junctions and reduce trails groomed twice
 - If we build new trails make them suitable for future competition opportunities: Homologation project

TRAINING & COMPETITION TRAIL IMPROVEMENTS

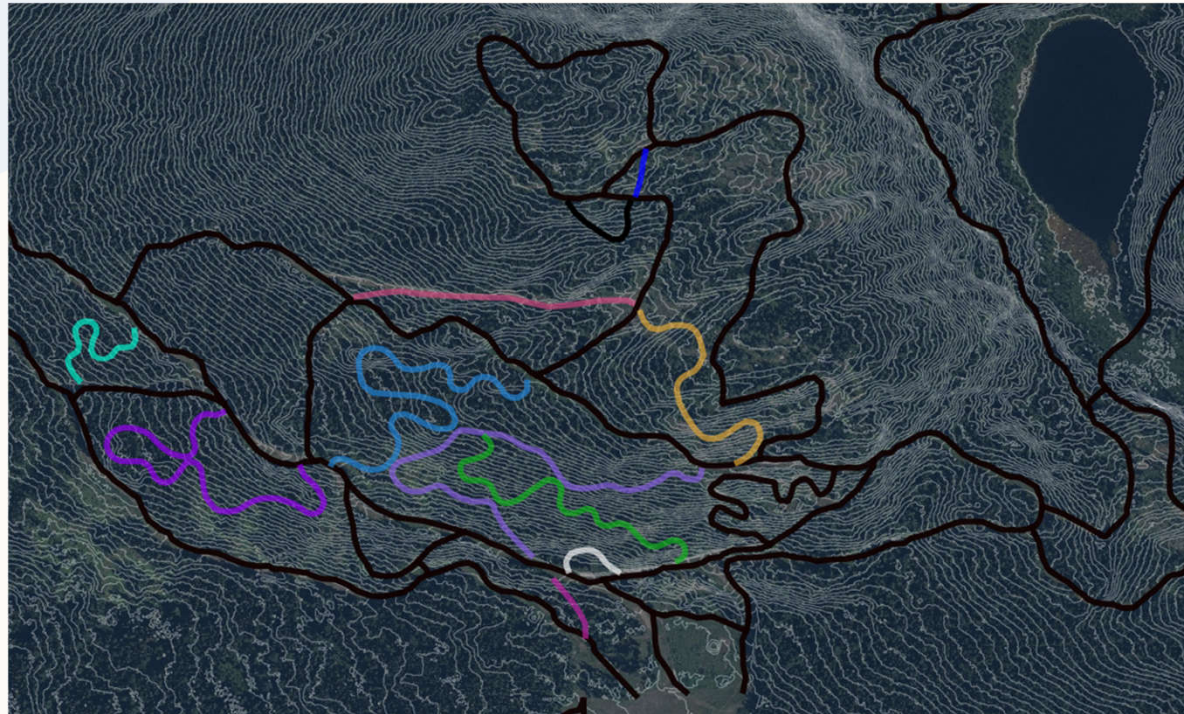
10

- Current race alignments were designed and built in the late 1980s/early 90s, and no longer meet major competition standards
 - We have not added technical terrain for 30 years!
- Research and options compiled since 2022, and consultant Reidar Zapf-Gilje engaged in 2023-24
- With minor additions using opportunities to make trails more efficient, the race network can be updated to support all current race types (individual, mass start, pursuit, sprint, team sprint, relay, and skiathlon), para-nordic as well as improve general fun technical training terrain and biathlon loop options
- Adds/renovates up to 12 active right-hand corners, a new wide uphill close to stadium for rabbits training, easier access to D&O and Hilltop, and slow/fast options going into major technical corners

TRAIL OVERVIEW

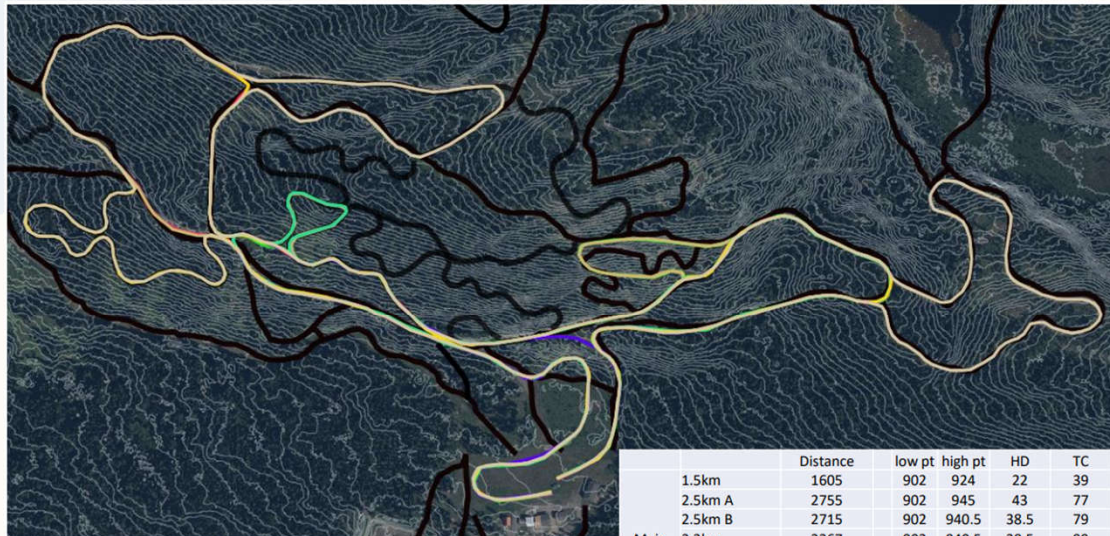
11

- Gully Trail
- New Hilltop Descent
- XYS
- The Ear
- Logging Rd Connector
- Main (NL area climb)
- New Corkscrew
- Speedcatcher
- Stadium Connector
- Upper dip Connector



MAIN LOOPS

12



	Distance	low pt	high pt	HD	TC	A hills	B hills	C hills
1.5km	1605	902	924	22	39	0	2	0
2.5km A	2755	902	945	43	77	1	2	0
2.5km B	2715	902	940.5	38.5	79	1	1	0
Main Loops	3.3km	902	940.5	38.5	99	1	2	0
	3.75km A	902	945	43	113	1	3	0
	3.75km B	902	940.5	38.5	116	1	3	0
	5km A	902	953	51	168	2	4	0
	5km B	902	953	51	171	2	4	0

- More rolling profiles
- Better flow, particularly for mass starts
- Larger climbs situated towards the end of the loops

TWO-LOOP COURSES

13



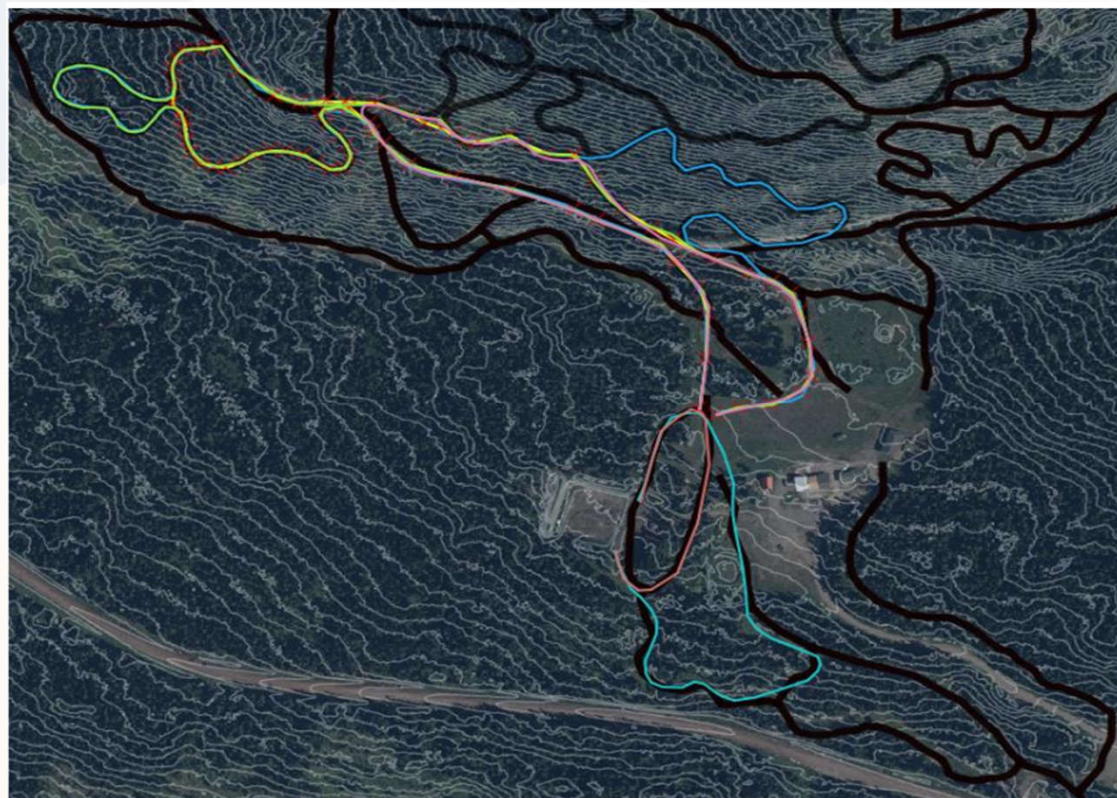
	Distance	low pt	high pt	HD	TC	A hills	B hills	C hills		Distance	low pt	high pt	HD	TC	A hills	B hills	C hills		
Western	2.5km	2491	902	939	37	83	0	3	0	Eastern	2.5km	2557	902	940	38	82	1	2	0
Course	3.75km	3990	902	953	51	124	0	4	0	Course	3.75km	3600	902	960	58	118	2	2	0

- Relay and Skiathlon ideally have separate courses for classic and skate
 - These are fun races, we don't do much due to lack of appropriate courses
- Will also improve competition grooming/course logistics

UPDATED BIATHLON LOOPS

14

- Increased training terrain close to range
- 1.5k, 2k, 2.5k, and 3k clockwise loops
- No cross in courses



SKI PLAYGROUND ENHANCEMENT

- Current ski playground seems underutilized
- Proposed race-course alignments using parts of the ski playground is an opportunity to enhance the area
- Exact design recommendations in progress
- Priorities:
 - Groomability- some young skiers would appreciate better grooming conditions in the playground
 - Adding lower-angle hill options- the existing hills are all relatively steep, making for harder grooming, and icier conditions which can be scary for young skiers
 - Additional features (bumps, obstacle courses)
 - Preserving powder, trees, shade, & opportunities to ‘make your own trail’
 - Improving drainage



WHAT DOES IT TAKE TO BUILD A NEW TRAIL

- Clear priority from members
- Leadership; project management
- Authorization. 1 to 2-year process
 - Final field layout
 - Engagement with Office of the Wet'suwet'en
 - Cultural Heritage survey
 - Authorization process
- Funding: Trails now cost \$10 to \$25k per km
 - Funders often want “shovel ready” (authorizations in hand)

WHAT IS NEXT

- Feedback from members
 - Please e-mail trails@bvnordic.ca, contact Roger McMillan about the competition trail plan or Kevin Kriese for other parts of the trail plan.
 - We really need some volunteers to step up and help spearhead new trail projects.
- New Trail Plan
 - We will prepare a new trail plan that reflects these concepts and member feedback. That new plan will guide trail improvements and planning of any new trails.